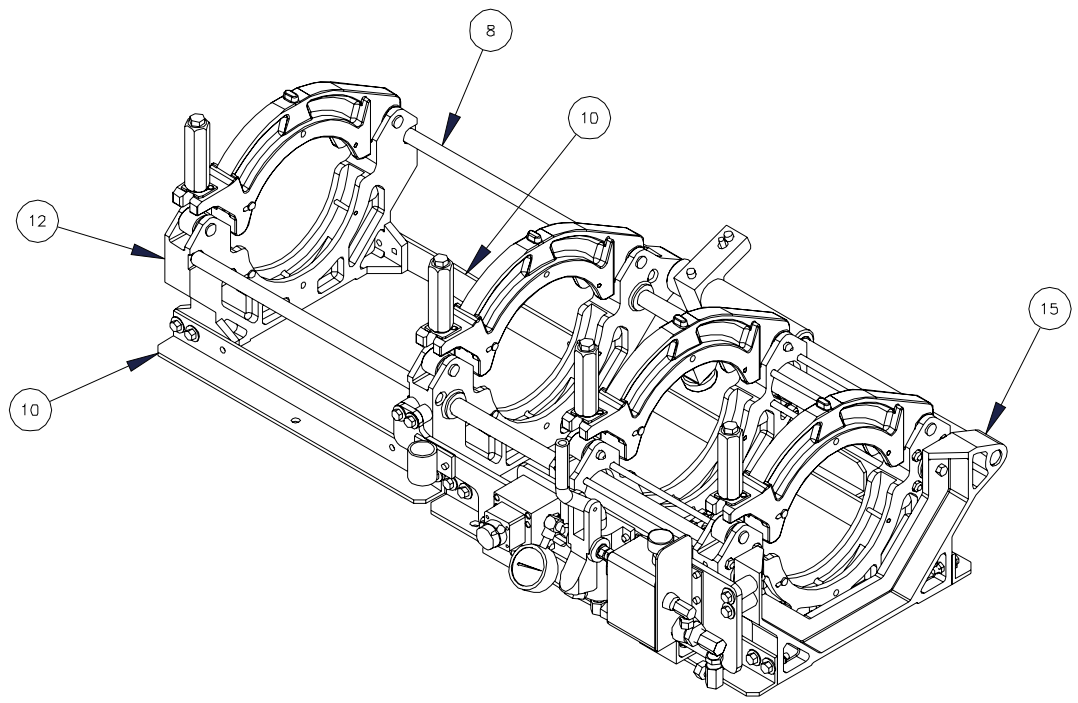






NOTES:  
 1. DISCARD RETAINING RING OF 28-8602-9004-10, GROOVED CLEVIS.

REVISIONS				
DATE	REV	DESCRIPTION	DATE	APPROVED
04/01/05	A	ADDED 00-7455-0001-00		



ITEM	QTY	PART NUMBER	DESCRIPTION
1	4	28-8208-4200-20	BOLT, TOGGLE, CF-28
2	4	28-8208-9150-30	HANDLE ASSEMBLY
3	1	28-8208-9040-20	CLAMP, LOWER, SLIDING, RIGHT
4	4	28-8208-9050-20	CLAMP, UPPER, CF28
5	1	28-8208-9060-20	CLAMP, LOWER, SLIDING, LEFT
6	1	28-8208-4110-20	BRACKET, LEFT BASE
7	1	28-8208-4120-20	BRACKET, RIGHT BASE
8	2	28-8208-4130-20	ROD, TIE CLAMP
9	1	28-8208-4140-20	SHAFT, FACER PIVOT
10	2	28-8208-4170-20	EXTENSION, LOWER
11	1	28-8208-4180-30	FACER PIVOT ARM ASSEMBLY
12	1	28-8208-9010-20	CLAMP, LOWER REAR STATIONARY
13	1	28-8208-9020-20	CLAMP, LOWER FRONT STATIONARY
14	1	28-8208-1100-30	HYDRAULIC MOUNT PANEL ASSEMBLY - 28HP(a)
15	1	28-8208-4030-20	SUPPORT, GUIDE ROD STABILIZER
16	4	28-8204-4060-20	PLATE, WEAR
17	8	28-8208-4100-20	ROD, PISTON TIE
18	2	28-8208-1200-30	CARRIAGE CYLINDER ASSEMBLY
19	1	300381	MANIFOLD, QUICK CDNECT
20	2	28-8208-1030-20	SPACER, LONG
21	2	28-8208-1010-20	ANGLE, PANEL MOUNT
22	2	28-8208-1020-20	SPACER, SHORT
23	8	28-8602-9004-10	GROOVED CLEVIS W/ RET RING LG 2.25" DIA 1/4" 18-8 SS
24	8	28-8204-4330-10	SPRING, CPRSN .035" WIRE DIA
25	8	00-0215-0130-00	PIN, SPRING, .250 DIA X 2.00
26	8	00-6977-0001-00	RING, RETAINING INTERNAL
27	8	00-6994-0002-04	SCREW, SELF-TAPPING TYPE #8-32 X .50" LONG BLUNT POINT
28	8	00-6895-0003-00	PIN, COTTERLESS CLEVIS, .50 DIA X 2.00 DRIP
29	2	00-0020-0400-03	SCREW, SET, 1/4-20 X .38
30	22	00-0003-0003-00	NUT, ESNA 3/8"-16NC-3 LGT STD HGT PLTD
31	16	00-0036-0003-00	NUT, FIN HEX 3/8-16NC-2 PLTD A-307
32	2	00-0203-0600-06	BOLT, HEX HD .375-16 X 3/4" SAE GR 5-ZINC PL-REPLCS HB0006
33	16	00-0203-0600-12	BOLT, HEX HD .375-16 X 1.5" SAE GR 5-ZINC PL-REPLCS HB0090
34	6	00-0203-0600-20	BOLT, HEX HD .375-16 X 2.5" SAE GR 5-ZINC PL-REPLCS HB0009
35	24	00-0435-0004-00	WASHER, FL STD SAE PL 3/8" REPLCS HW0014
36	16	00-6985-0001-00	WASHER, FLAT, 3/8, THIN
37	4	00-0203-0600-10	BOLT, HEX HD .375-16 X 1.25" SAE GR 5-ZINC PL-REPLCS HB0007
38	2	00-0203-0600-14	BOLT, HEX HD .375-16 X 1.75" SAE GR 5-ZINC PL-REPLCS HB0008
39	4	00-0003-0001-00	NUT, ESNA 1/4"-20NC-3 LT STD HGT PLTD
40	4	00-0685-0400-08	SCREW FH5C 1/4-20 X 1 Z P REPLCS HS0041
41	2	00-0823-0400-08	SHCS 1/4-20 X 1" ZINC PL REPLCS HS0020 & 28-8501-1400-10
42	2	HW0017	WASHER, LOCK, 1/4 HIGH COLLAR
43	4	HW0020	STRAIGHT 4 BOSS/ 6 37 FLARE
44	2	HW0017	BO 4 BOSS / 6 37 FLARE
45	4	28-8208-1040-30	HOSE ASSEMBLY 1/4" X 13.00
46	2	28-8208-1050-30	HOSE ASSEMBLY 1/4" X 11.00
47	8	00-7455-0001-00	NUT, PUSH, .25 DIA
48	2	00-0203-0600-22	BOLT, HEX HD .375-16 X 2.75" SAE GR 5-ZINC PL-REPLCS HB0118

SIZE	MAIN ASSEMBLY USAGE							SUB-ASSEMBLY USED ON			
	10CQ	20CQ	10EP	20EP	10HP	20HP	40	QTY	ASSEMBLY	QTY	ASSEMBLY
4	.	.	.	.	.	.	.	1	28-0208-1000-40	.	.
8	.	.	.	.	.	.	.	.	.	.	.
14	.	.	.	.	.	.	.	.	.	.	.
18	.	.	.	.	.	.	.	.	.	.	.
24	.	.	.	.	.	.	.	.	.	.	.
36	.	.	.	.	.	.	.	.	.	.	.

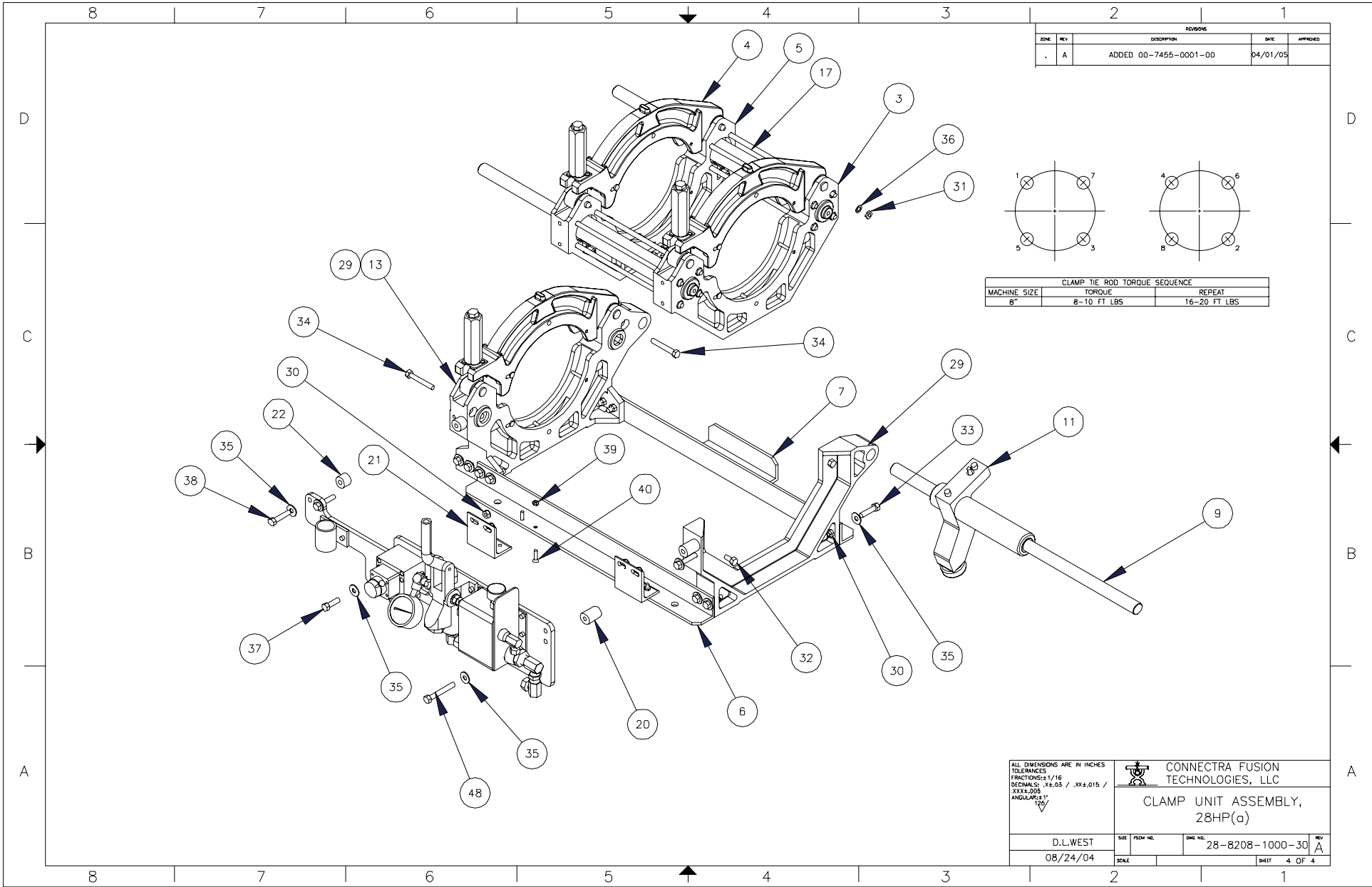
APPR: \_\_\_\_\_ DATE: \_\_\_\_\_  
 CHECKED: \_\_\_\_\_ DATE: \_\_\_\_\_

ALL DIMENSIONS ARE IN INCHES  
 TOLERANCES:  
 FRACTIONS: ± 1/16  
 DECIMALS: x 1.03 / xx 1.015 /  
 ANGULAR: ± 1°  
 FINISH: TV

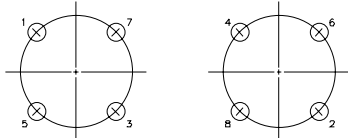
CONNECTRA FUSION TECHNOLOGIES, LLC

CLAMP UNIT ASSEMBLY, 28HP(a)


DRAWING: D.L.WEST  
 DATE: 08/24/04  
 SHEET: 1 OF 4



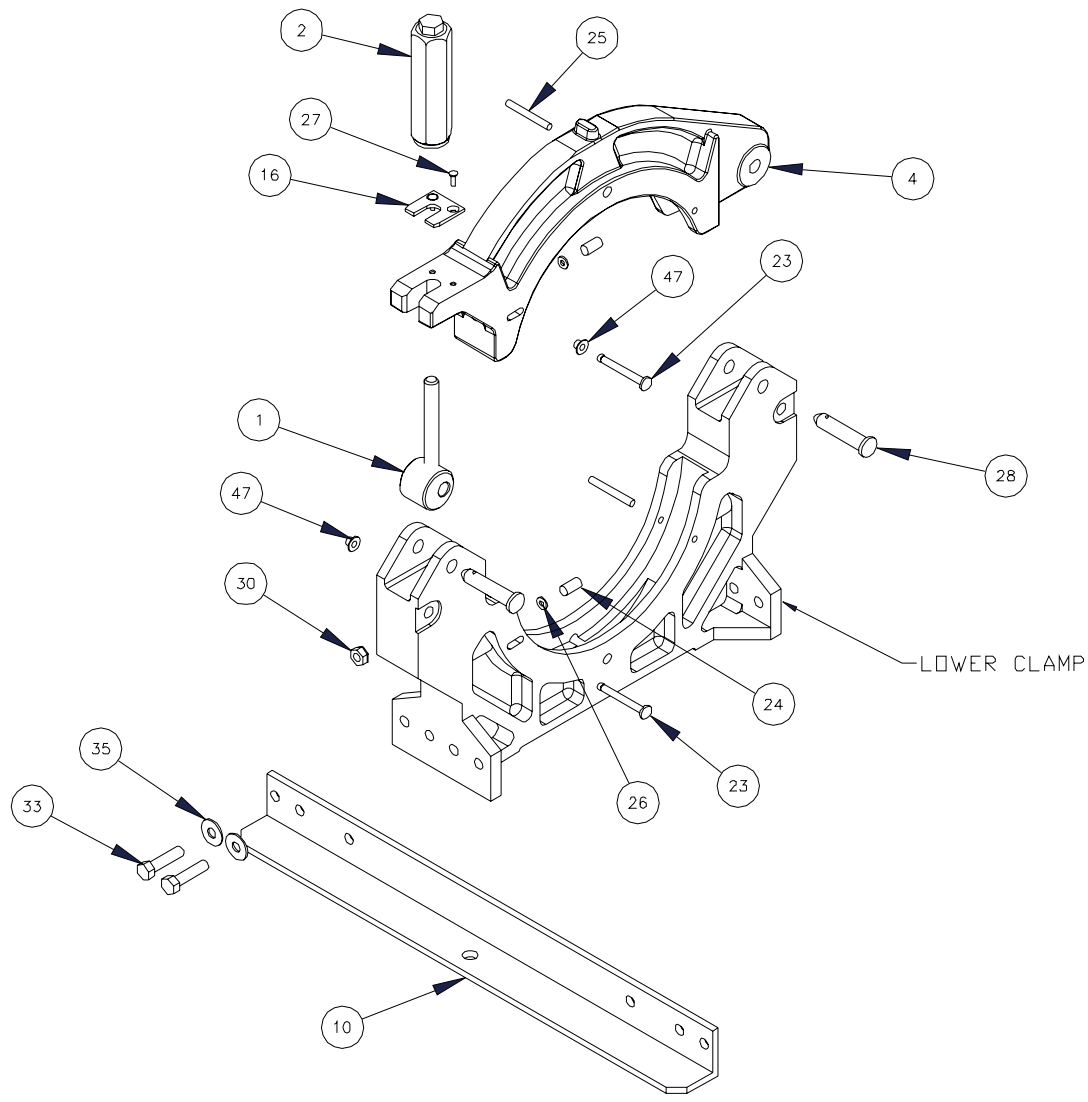
REVISIONS				
ZONE	REV	DESCRIPTION	DATE	APPROVED
.	A	ADDED 00-7455-0001-00	04/01/05	




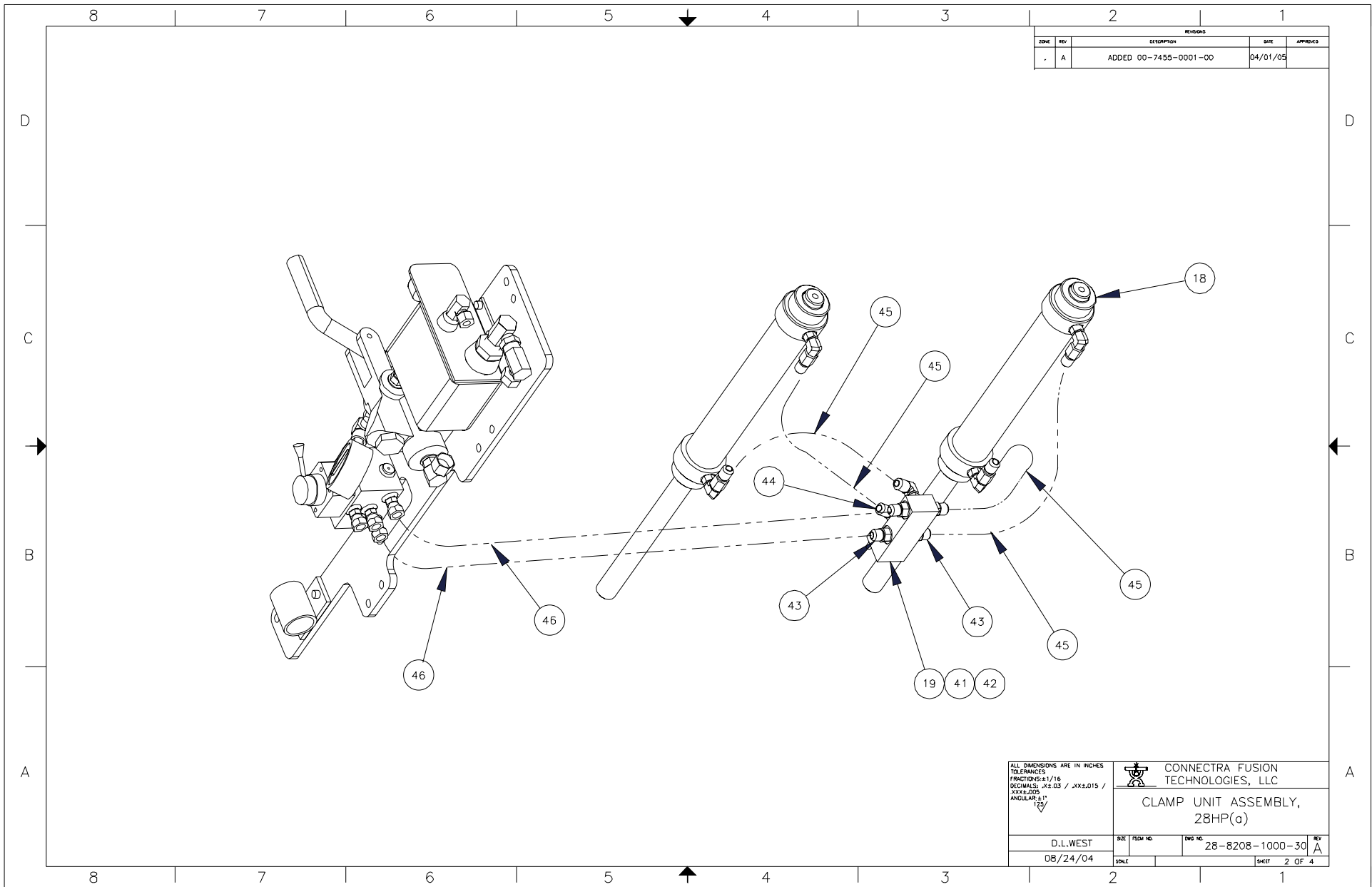
CLAMP TIE ROD TORQUE SEQUENCE		
MACHINE SIZE	TORQUE	REPEAT
8"	8-10 FT LBS	16-20 FT LBS

ALL DIMENSIONS ARE IN INCHES TOLERANCES FRACTIONS: ± 1/16 DECIMALS: .XX, .05 / .XX±, .015 / XXX±, .005 ANGULARS: ± 1°		 <b>CONNECTRA FUSION TECHNOLOGIES, LLC</b>	
		<b>CLAMP UNIT ASSEMBLY, 28HP(a)</b>	
D.L.WEST	DATE: 08/24/04	DWG NO.: 28-8208-1000-30	REV: A
	SCALE:	SHEET: 4 OF 4	


ZONE		REV	DESCRIPTION	DATE	APPROVED
-		A	ADDED 00-7455-0001-00	04/01/05	



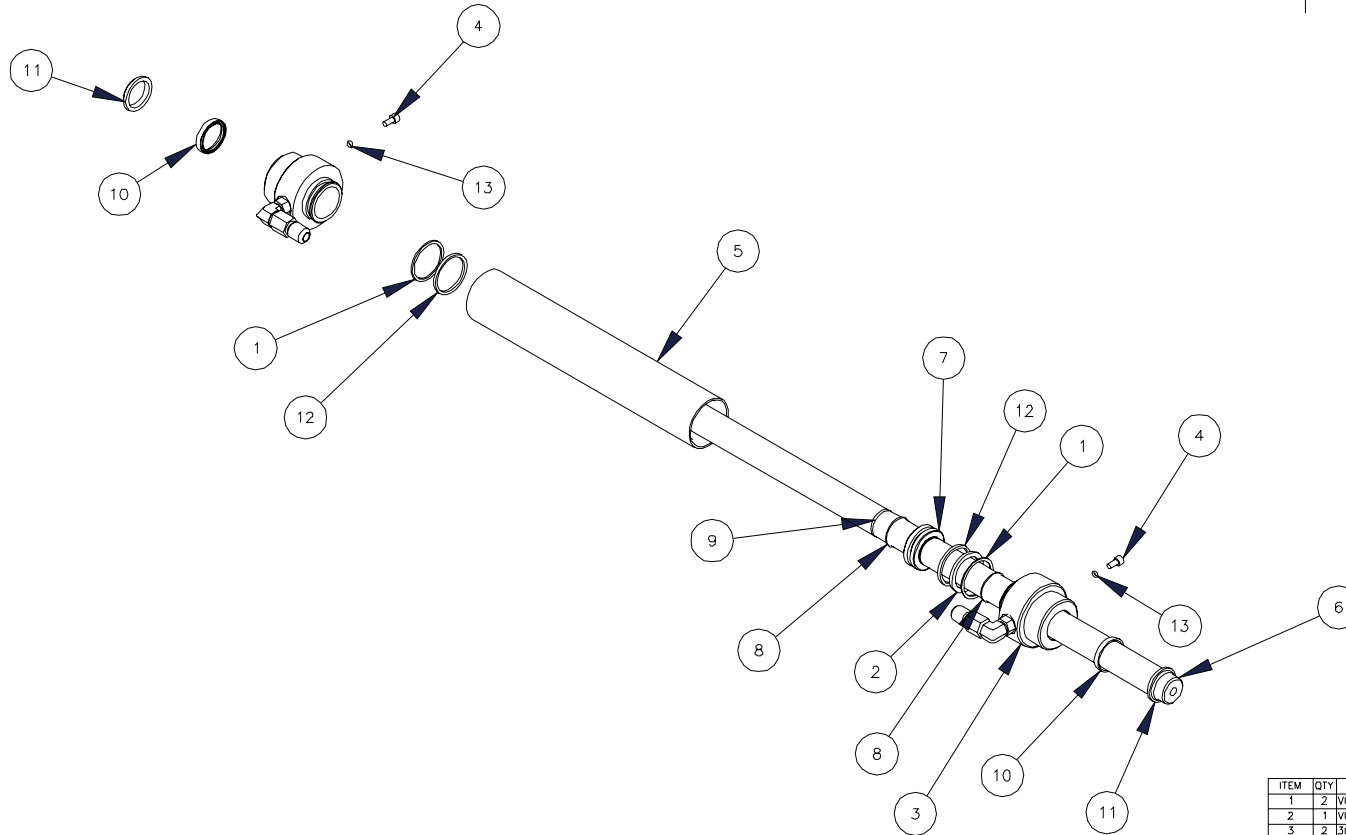
<small>ALL DIMENSIONS ARE IN INCHES          TOLERANCES          FRACTIONS: 1/16          DECIMALS: .XX, .03 / .XX ± .015 /          .XXX ± .005          ANGLES: ±1°</small>		 <b>CONNECTRA FUSION          TECHNOLOGIES, LLC</b>	
<b>CLAMP UNIT ASSEMBLY,          28HP(a)</b>			
D.L.WEST		<small>SIZE FROM NO.</small> 28-8208-1000-30	<small>REV</small> A
08/24/04		<small>SCALE</small> 	<small>SHEET</small> 3 OF 4



ZONE		REV	DESCRIPTION	DATE	APPROVED
.		A	ADDED 00-7455-0001-00	04/01/05	

ALL DIMENSIONS ARE IN INCHES TOLERANCES FRACTIONS: ±1/16 DECIMALS: ±.03 / ±.015 / .XXX±.005 ANGULAR: ±1°	 CONNECTRA FUSION TECHNOLOGIES, LLC			
	CLAMP UNIT ASSEMBLY, 28HP(a)			
D.L.WEST	SIZE	FORM NO	DWG NO	REV
08/24/04	SOLE		28-8208-1000-30	A
			SHEET	2 OF 4

NOTES:



REVISIONS				
ZONE	REV	DESCRIPTION	DATE	APPROVED

ITEM	QTY	PART NUMBER	DESCRIPTION
1	2	V00141	BACKUP RING, 573-125 HERC.
2	1	V00153	SEAL, PISTON, PTFE, 1.50 BORE X .116
3	2	300366	FRONT ENDCAP ASSEMBLY
4	2	H50025	SCREW, SOCHD, 10-32 X .38
5	1	28-8208-1210-20	CYLINDER, HYDRAULIC
6	1	28-8208-1220-20	ROD, PISTON
7	1	300104	PISTON, CARRIAGE CYLINDER
8	2	V00120	RING, SPRAL RETAINING, 1.00" I.D.
9	1	V00139	SEAL, O RING, 568-117 HERC.
10	2	V00179	U-SEAL, ROD, 1.00 X 1 1/4 X 3/16 HERC.
11	2	V00188	WIPER RING, 1.00 X 1.272 X .104
12	2	V00140	SEAL, O RING, 568-125 HERC.
13	2	V00128	SEAL, O RING, #006

ALL DIMENSIONS ARE IN INCHES  
 TOLERANCES  
 FRACTIONS: ±1/16  
 DECIMALS: .XX, .03 / .XX ±.015 /  
 ANGULAR: ±1°  
 FINISH: 125/

CONNECTRA FUSION TECHNOLOGIES, LLC

CARRIAGE CYLINDER ASSEMBLY

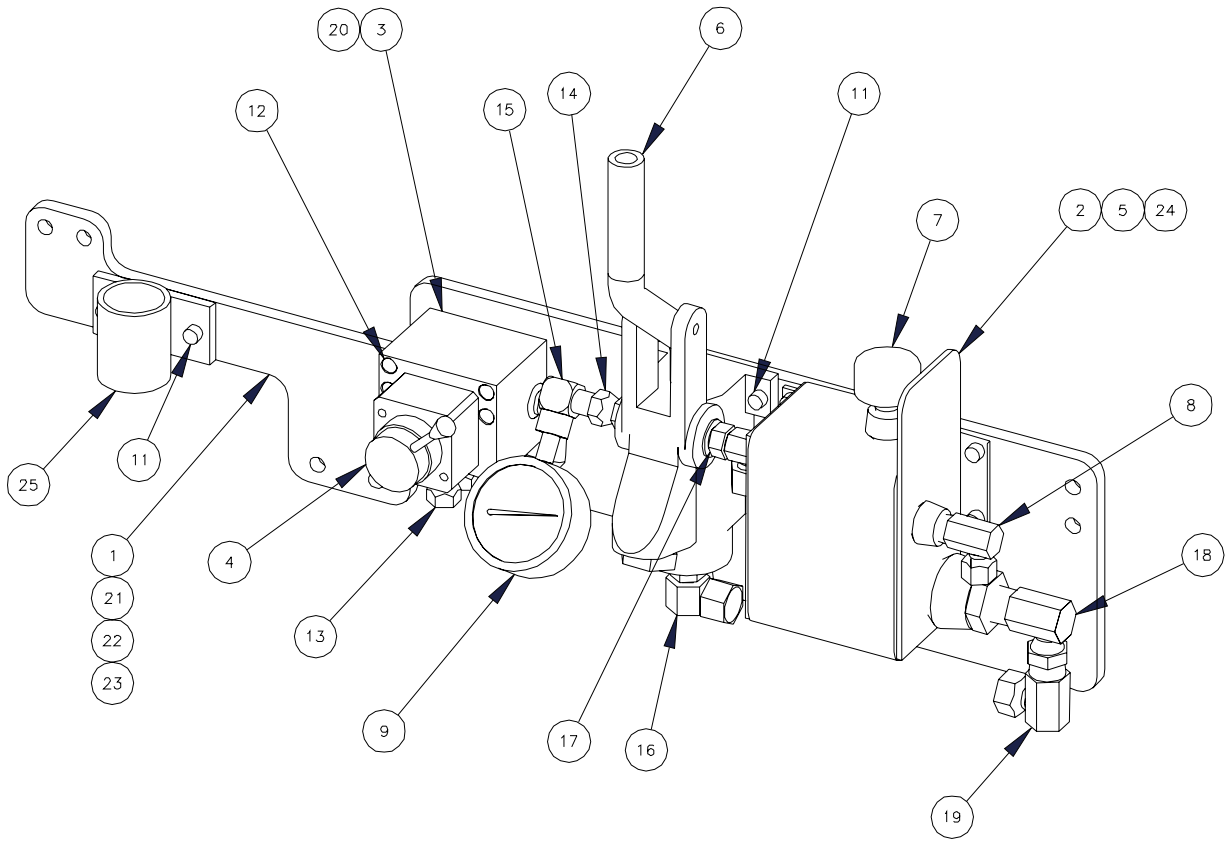
SIZE	MAIN ASSEMBLY USAGE								SUB-ASSEMBLY USED ON			
	10CQ	20CQ	10EP	20EP	10HP	20HP	28CQA	QTY	ASSEMBLY	QTY	ASSEMBLY	
4	.	.	.	.	.	.	.	2	28-8208-1000-30	.	.	
8	.	.	.	.	.	.	.	.	.	.	.	
14	.	.	.	.	.	.	.	.	.	.	.	
18	.	.	.	.	.	.	.	.	.	.	.	
24	.	.	.	.	.	.	.	.	.	.	.	
36	.	.	.	.	.	.	.	.	.	.	.	

APPR: DATE: CHECKED: DATE:

DRAWING: D.L.WEST DATE: 08/20/04  
 SHEET: 1 OF 1

NOTES:

REVISIONS				
ZONE	REV	DESCRIPTION	DATE	APPROVED



ITEM	QTY	PART NUMBER	DESCRIPTION
1	1	28-8208-1100-20	PLATE, HYDRAULIC PANEL
2	1	300330	RESERVOIR ASSY, HAND PUMP
3	1	300311	HYDRAULIC SUBPLATE
4	1	V00490	DIRECTIONAL CONTROL VALVE, MANIFOLD MOUNT
5	1	V00163	STRAINER, SUCTION, 3/4" NPT X 4"
6	1	V00110	PUMP, HYDRAULIC, HAND, REPUBLIC
7	1	V00020	CAP, RESERVOIR 1/4NPT
8	1	V00054	FITTING, HYD, 4MP-4FPX 90
9	1	V00950	GUACE, PRESSURE, 0-2000 PSI
10	4	00-0823-0400-04	SHCS 1/4-20 X 1/2" ZINC PL REPLCS HSD018 & 28-8501-0900-10
11	6	00-0823-0400-06	SHCS 1/4-20 X 3/4" ZINC PL REPLCS HSD019 & 28-8501-1300-10
12	4	00-0823-0400-20	SHCS 1/4-20 X 2-1/2" ZINC PL REPLCS HSD022
13	4	V00270	FITTING, HYD, 4MB-4FPX
14	1	V00264	FITTING, HYD, 6MB-4FPX
15	1	V00709	FITTING, HYD, 4MP-4FP 90 STREET ELBOW
16	1	V00355	FITTING, HYD, 6MB-6FPX 90
17	1	V00276	FITTING, HYD, 6MB-4FPX 90
18	1	V00356	FITTING, HYD, 8MP-6FPX 90
19	1	V00053	FITTING, HYD, 6MP-6FPX 90
20	2	V00493	HOLLOW HEX PLUG, NO. 4
21	1	310002	HOSE ASSEMBLY 3/8" X 5.125
22	1	310004	HOSE ASSEMBLY 1/4" X 17.25
23	1	310005	HOSE ASSEMBLY 1/4" X 11.75
24	1	V00329	MAGNET, ALNICO 5, RECT., 4.00 X .375 X .125
25	1	28-8208-1060-30	WELDMENT, WRENCH HOLDER

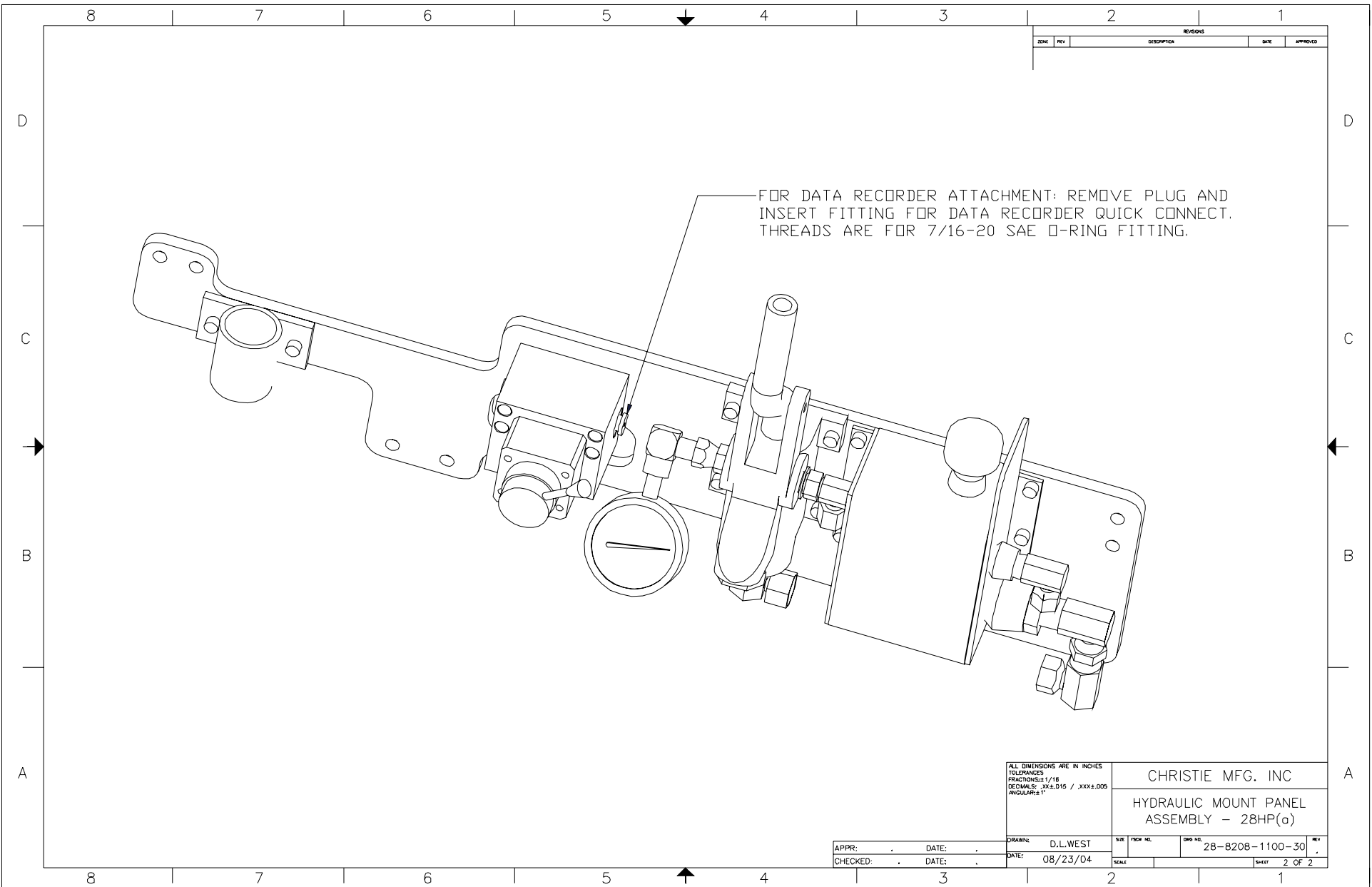
ALL DIMENSIONS ARE IN INCHES  
 TOLERANCES  
 FRACTIONS: 1/16  
 DECIMALS: .XX, .015 / .XXX, .005  
 ANGULAR: ±1°

CHRISTIE MFG. INC  
 ASSEMBLY - 28HP(a)

DRAWN: D.L.WEST  
 DATE: 08/23/04  
 SHEET 1 OF 2

SIZE	MAIN ASSEMBLY USAGE						SUB-ASSEMBLY USED ON				
	10CQ	20CQ	10EP	20EP	10HP	20HP	20CP	QTY	ASSEMBLY	QTY	ASSEMBLY
4	.	.	.	.	.	.	.	1	28-8208-1000-30	.	.
8	.	.	.	.	.	.	.	.	.	.	.
14	.	.	.	.	.	.	.	.	.	.	.
18	.	.	.	.	.	.	.	.	.	.	.
24	.	.	.	.	.	.	.	.	.	.	.
36	.	.	.	.	.	.	.	.	.	.	.

APPR: . . . DATE: . . .  
 CHECKED: . . . DATE: . . .



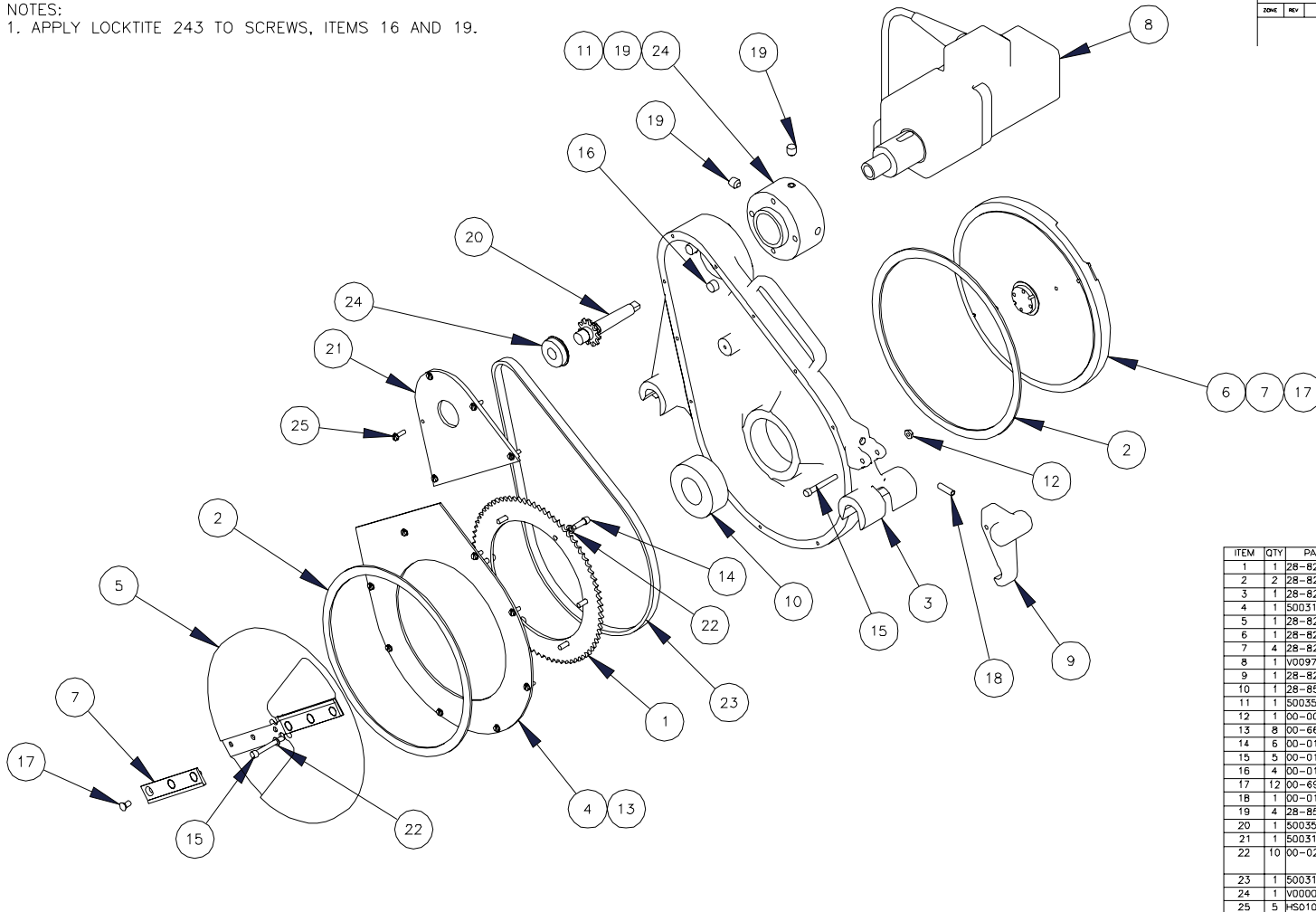
FOR DATA RECORDER ATTACHMENT: REMOVE PLUG AND  
 INSERT FITTING FOR DATA RECORDER QUICK CONNECT.  
 THREADS ARE FOR 7/16-20 SAE O-RING FITTING.

REVISIONS				
ZONE	REV	DESCRIPTION	DATE	APPROVED

<small>ALL DIMENSIONS ARE IN INCHES          TOLERANCES          FRACTIONS: 1/16          DECIMALS: .XX, .D15 / .XXX, .005          ANGULAR: ±1°</small>		<b>CHRISTIE MFG. INC</b> <b>HYDRAULIC MOUNT PANEL ASSEMBLY - 28HP(a)</b>	
<small>APPR:</small> . <small>DATE:</small> . <small>CHECKED:</small> . <small>DATE:</small> .	<small>DRAWN:</small> D.L.WEST <small>DATE:</small> 08/23/04	<small>SIZE:</small> 1/2" X 1/2" <small>SCALE:</small>	<small>DWG NO.:</small> 28-8208-1100-30 <small>REV:</small> . <small>SHEET:</small> 2 OF 2

NOTES:

1. APPLY LOCKTITE 243 TO SCREWS, ITEMS 16 AND 19.



SIZE	MAIN ASSEMBLY USAGE							SUB-ASSEMBLY USED ON			
	10CQ	20CQ	10EP	20EP	10HP	20HP	28	QTY	ASSEMBLY	QTY	ASSEMBLY
4	.	.	.	.	.	.	.	.	.	.	.
8	.	.	.	.	.	.	.	.	.	.	.
14	.	.	.	.	.	.	.	.	.	.	.
18	.	.	.	.	.	.	.	.	.	.	.
24	.	.	.	.	.	.	.	.	.	.	.
36	.	.	.	.	.	.	.	.	.	.	.

REVISIONS				
ZONE	REV	DESCRIPTION	DATE	APPROVED

ITEM	QTY	PART NUMBER	DESCRIPTION
1	1	28-8208-4610-20	SPROCKET, DRIVEN
2	2	28-8208-4640-20	WASHER, FELT
3	1	28-8208-4510-20	FACER BODY, 28EP
4	1	500313	COVER, FACER, 28LM FACER
5	1	28-8208-4540-20	FRONT FACER PLATE
6	1	28-8208-4550-20	REAR FACER PLATE
7	4	28-8208-4560-20	BLADE, CENTREFUSE 28
8	1	V00976	MOTOR, ELEC, 110 VAC
9	1	28-8204-4530-20	HANDLE, LOCKING
10	1	28-8539-0900-10	BEARING, RADIAL BALL
11	1	500355	NOSE CONE, FACER, 28
12	1	00-0003-0001-00	NUT, ESNA 1/4"-20NC-3 LT STD HGT PLTD
13	8	00-6688-1024-04	SCREW, SELF TAPPING, 10-24 X .50
14	6	00-0130-0400-06	SCREW, SOCHD, 1/4-20 X .75
15	5	00-0130-0400-16	SCREW, SOCHD, 1/4-20 X 2.00
16	4	00-0130-0600-08	SCREW, SOCHD, 3/8-16 X 1.00
17	12	00-6993-0400-04	SCREW, FLTHD, 1/4-20 X .50
18	1	00-0136-0177-00	SPRING, COMPRESSION
19	4	28-8503-6140-10	SCREW, SET, 1/2-13 X .50
20	1	500356	WELDMENT, DRIVE SPROCKET WITH TAPER
21	1	500312	COVER, BEARING MOUNT, 28LM FACER
22	10	00-0238-0001-00	WASHER, LK SAE STD MED 1/4" PL REPLCS HWOOD6
23	1	500316	CHAIN, SPROCKET
24	1	V00003	BEARING, W/SNAPRING, 203S2ZG
25	5	H50108	SCREW, SELF TAPPING, 10-24 X .63
26	1	V00745	STICKER, ROTATING BLADE 1.75 X 2.5

ALL DIMENSIONS ARE IN INCHES  
 TOLERANCES: FRACTIONS: ± 1/16  
 DECIMALS: .XX ± .05 / .XXX ± .015 /  
 ANGULAR: ± .1°  
 FINISH: 125

**CONNECTRA FUSION TECHNOLOGIES, LLC**

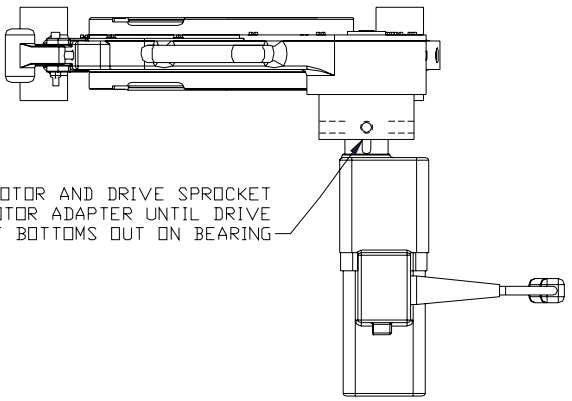
**FACER ASSEMBLY, 28HP(a), 110 VAC**

DRAWN: D.L.WEST      DATE: 06/14/05  
 CHECKED:              DATE:              DATE: 06/14/05

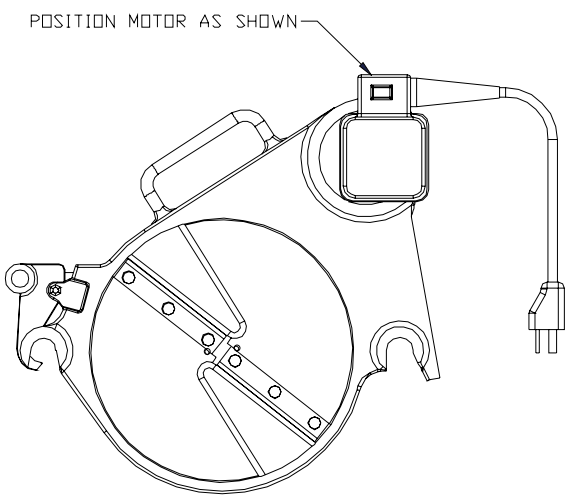
SCALE:              SHEET: 1 OF 2

8 7 6 5 4 3 2 1

REVISIONS				
ZONE	REV	DESCRIPTION	DATE	APPROVED

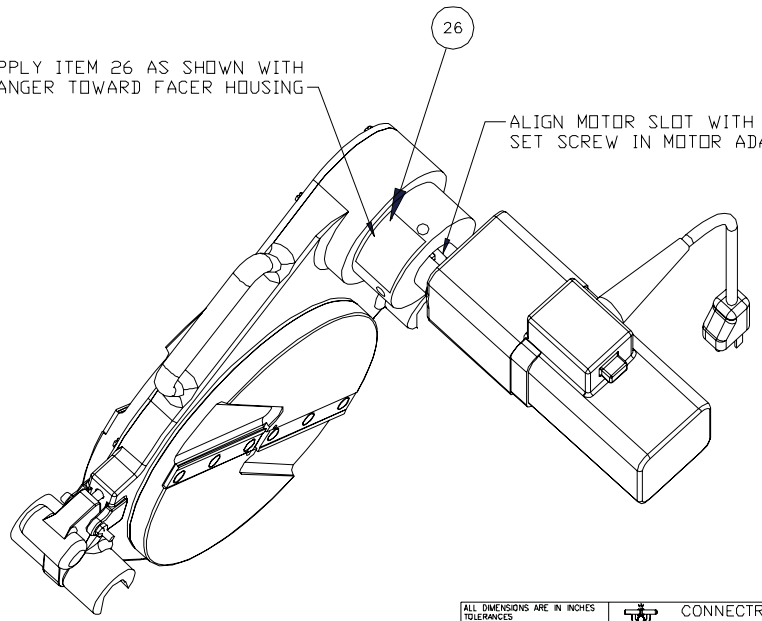


INSERT MOTOR AND DRIVE SPROCKET INTO MOTOR ADAPTER UNTIL DRIVE SPROCKET BOTTOMS OUT ON BEARING



POSITION MOTOR AS SHOWN

APPLY ITEM 26 AS SHOWN WITH DANGER TOWARD FACER HOUSING



ALIGN MOTOR SLOT WITH SET SCREW IN MOTOR ADAPTER

ALL DIMENSIONS ARE IN INCHES  
 TOLERANCES  
 FRACTIONS: ±1/16  
 DECIMALS: .XX, .03 / .XX±.015 /  
 .XXX±.005  
 ANGULAR: ±1°  
 FINISH: 125

 CONNECTRA FUSION TECHNOLOGIES, LLC

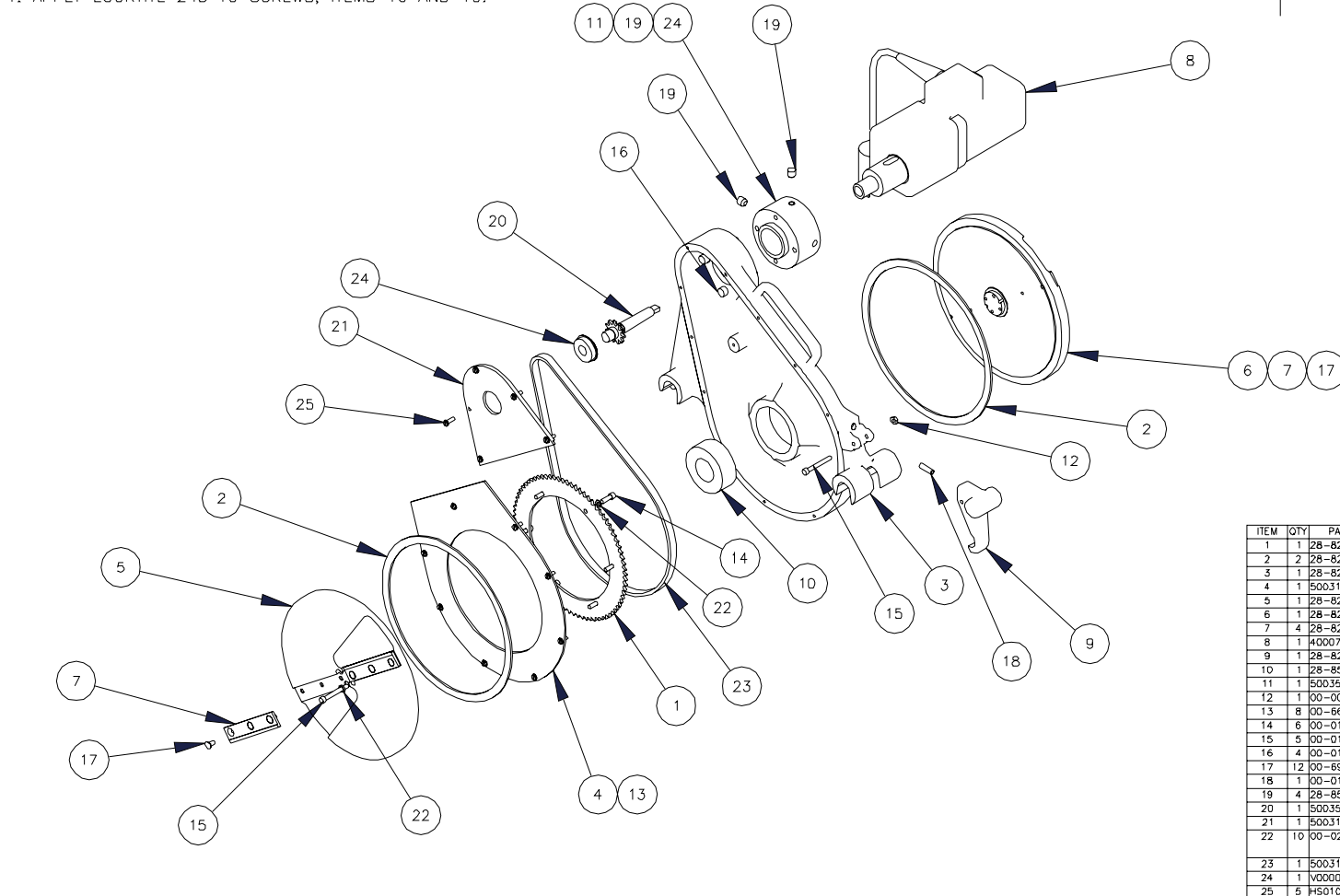
FACER ASSEMBLY, 28HP(o), 110 VAC

APPR:	DATE:	DRAWN: D.L.WEST	SIZE: TSDM NO.	DWG NO. 500359	REV
CHECKED:	DATE:	DATE: 06/14/05	SCALE:	SHEET 2 OF 2	

8 7 6 5 4 3 2 1

NOTES:

1. APPLY LOCKTITE 243 TO SCREWS, ITEMS 16 AND 19.



SIZE	MAIN ASSEMBLY USAGE						SUB-ASSEMBLY USED ON			
	10CQ	20CQ	10EP	20EP	10HP	20HP	QTY	ASSEMBLY	QTY	ASSEMBLY
4	.	.	.	.	.	.	.	.	.	.
8	.	.	.	.	.	.	.	.	.	.
14	.	.	.	.	.	.	.	.	.	.
18	.	.	.	.	.	.	.	.	.	.
24	.	.	.	.	.	.	.	.	.	.
36	.	.	.	.	.	.	.	.	.	.

ITEM	QTY	PART NUMBER	DESCRIPTION
1	1	28-820B-4610-20	SPROCKET, DRIVEN
2	2	28-820B-4640-20	WASHER, FELT
3	1	28-820B-4510-20	FACER BODY, 28EP
4	1	500313	COVER, FACER, 28LM FACER
5	1	28-820B-4540-20	FRONT FACER PLATE
6	1	28-820B-4550-20	REAR FACER PLATE
7	4	28-820B-4560-20	BLADE, CENTREFUSE 28
8	1	400077	FACER MOTOR ASSEMBLY, 230 VAC, 10' CORD
9	1	28-8204-4530-20	HANDLE, LOCKING
10	1	28-8539-0900-10	BEARING, RADIAL BALL
11	1	500355	NOSE CONE, FACER, 28
12	1	00-0003-0001-00	NUT, ESNA 1/4"-20NC-3 LT STD HGT PLTD
13	8	00-8688-1024-04	SCREW, SELF TAPPING, 10-24 X .50
14	6	00-0130-0400-06	SCREW, SOCHD, 1/4"-20 X .75
15	5	00-0130-0400-16	SCREW, SOCHD, 1/4"-20 X 2.00
16	4	00-0130-0600-08	SCREW, SOCHD, 3/8-16 X 1.00
17	12	00-6993-0400-04	SCREW, FLTHD, 1/4"-20 X .50
18	1	00-0136-0177-00	SPRING, COMPRESSION
19	4	28-8503-6140-10	SCREW, SET, 1/2-13 X .50
20	1	500356	WELDMENT, DRIVE SPROCKET WITH TAPER
21	1	500312	COVER, BEARING MOUNT, 28LM FACER
22	10	00-0238-0001-00	WASHER, LK SAE STD MED 1/4" PL REPLCS HW0006
23	1	500316	CHAIN, SPROCKET
24	1	V00003	BEARING, W/SNAPRING, 203SZZG
25	5	H50108	SCREW, SELF TAPPING, 10-24 X .63
26	1	V00745	STICKER, ROTATING BLADE 1.75 X 2.5

ALL DIMENSIONS ARE IN INCHES  
 TOLERANCES: FRACTIONS ±1/16  
 DECIMALS: ±.03 / .XX±.015 /  
 ANGULARS: ±.05  
 FINISH: 125

**CONNECTRA FUSION TECHNOLOGIES, LLC**

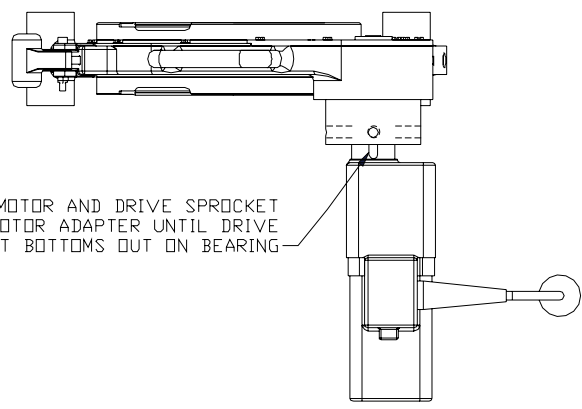
**FACER ASSEMBLY, 28HP(o), 230 VAC**

DRAWN: D.L.WEST      DATE: 06/14/05      SCALE:      SHEET 1 OF 2

REVISIONS				
ZONE	REV	DESCRIPTION	DATE	APPROVED

8 7 6 5 4 3 2 1

REVISIONS				
ZONE	REV	DESCRIPTION	DATE	APPROVED

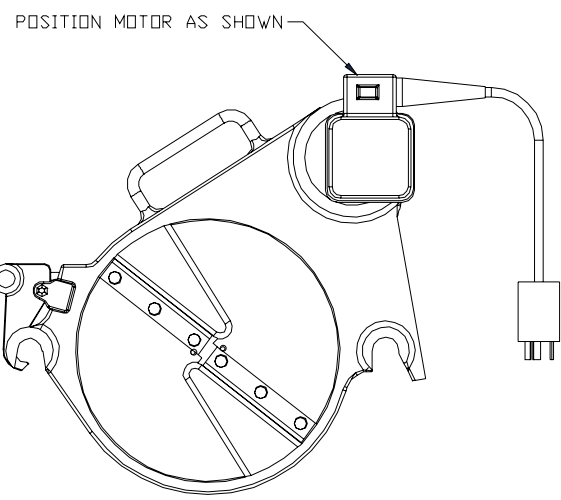


INSERT MOTOR AND DRIVE SPROCKET INTO MOTOR ADAPTER UNTIL DRIVE SPROCKET BOTTOMS OUT ON BEARING

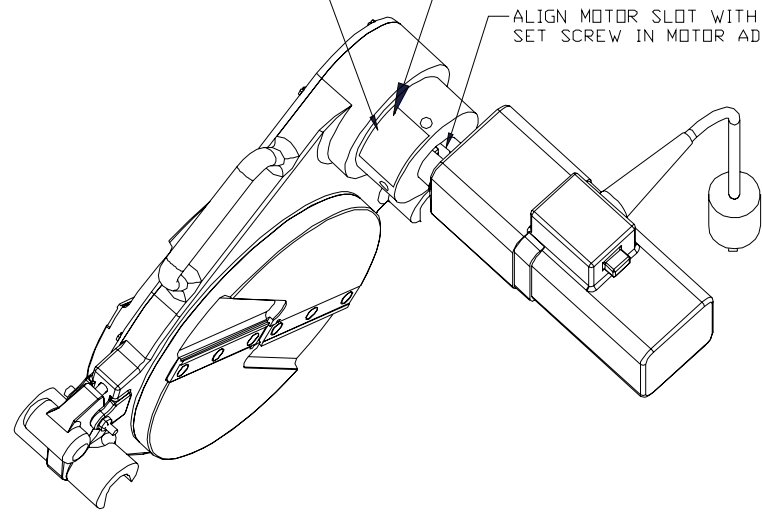
APPLY ITEM 26 AS SHOWN WITH DANGER TOWARD FACER HOUSING

ALIGN MOTOR SLOT WITH SET SCREW IN MOTOR ADAPTER

26



POSITION MOTOR AS SHOWN



D  
C  
B  
A

D  
C  
B  
A

8 7 6 5 4 3 2 1

ALL DIMENSIONS ARE IN INCHES  
TOLERANCES  
FRACTIONS: 1/16  
DECIMALS: .XX / .XXX / .XXX  
ANGULAR: ±1°  
FINISH: 125



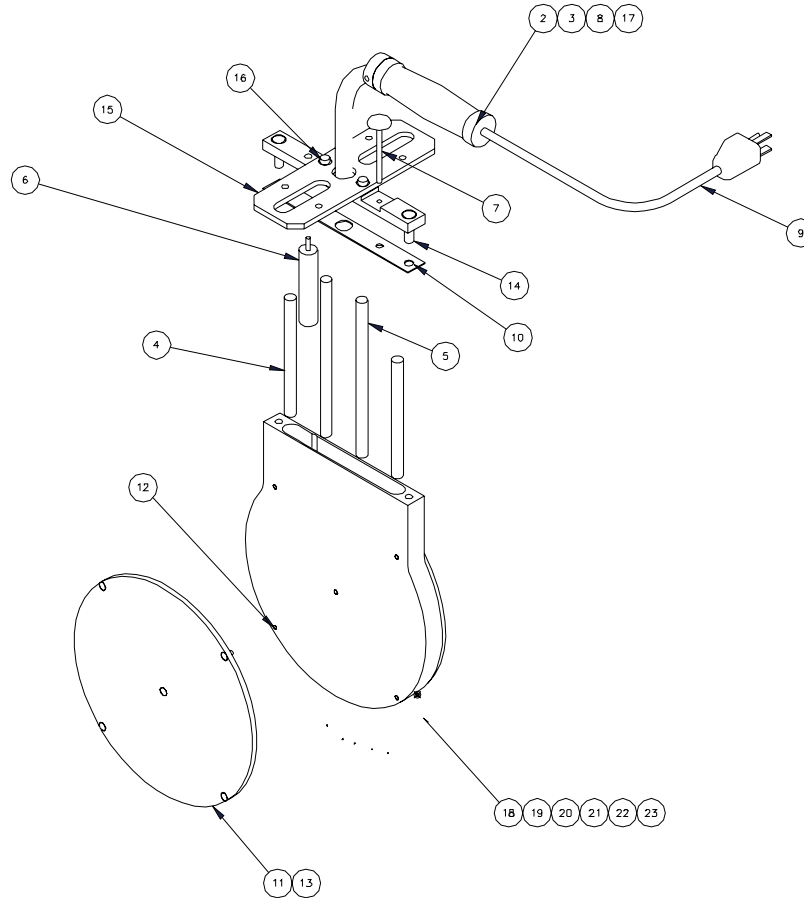
CONNECTRA FUSION TECHNOLOGIES, LLC

FACER ASSEMBLY, 28HP(a), 230 VAC

APPR:	DATE:	DRAWN:	D.L.WEST	SIZE:	FROM NO.:	ENG NO.:	500360	REV:
CHECKED:	DATE:	DATE:	06/14/05	SCALE:		SHEET:	2 OF 2	

NOTES:  
 1. USE APPROX 1 FT OF TAPE, ITEM 23.  
 2. FINISH: NONE.

		REVISES		
ZONE	REV	DESCRIPTION	DATE	APPROVED
A		REPLACED 600247 WITH 600280	03/02/04	
B		DELETED 8 SCREWS AND HELICOLDS	06/14/04	



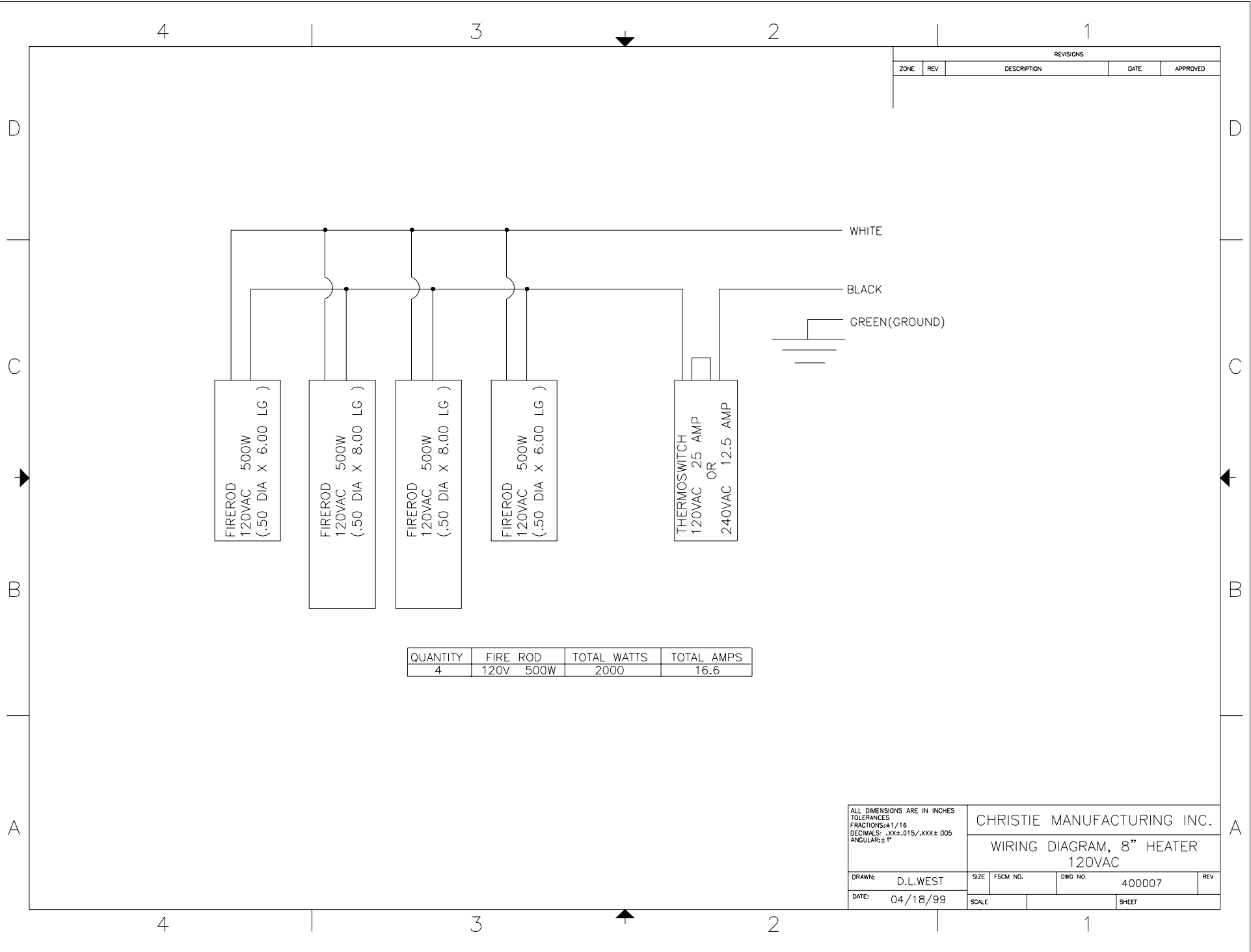
ITEM	QTY	PART NUMBER	DESCRIPTION
1	1	600267	CORE, HEATER, 28
2	1	600280	WELDMENT, HANDLE MOUNT
3	1	600088	HANDLE ASSEMBLY, HEATER
4	2	V00025	HEATER, CARTRIDGE, 120V, 500W--.5 X 6.00
5	2	V00026	HEATER, CARTRIDGE, 120V, 500W--.5 X 8.00
6	1	V00169	THERMOSWITCH, LARGE, 17052-0
7	1	V00168	THERMOMETER, 4" X 1/4"-28, 0-750 F
8	1	600226	STRAIN RELIEF, 1/2"
9	1	28-8404-0800-10	CORD SET(16/3) W/MOLDED PLUG
10	1	V00074	GASKET, HEATER, 8"
11	2	600204	BUTT PLATE, HEATER, 8"
12	10	V00642	HELICOIL 10-24 X .285
13	10	HS0045	SCREW, FLTHD, BRASS, 10-24 X .44
14	2	HS0027	SCREW, SOCHD, 3/8-16 X 1.00
15	1	600249	PLATE, HEATER PULL OFF
16	2	HB0112	BOLT, SHOULDER, 5/16 X .25
17	1	V00114	RING, HOG, #H1
18	1	28-8408-0530-10	TERMINAL, HIGHT TEMP
19	3	28-8412-0100-10	INSULATING SLEEVE, 1.63 LG
20	1	28-8408-0700-10	TERMINAL, AMP #323755
21	1	28-8408-0100-10	TERMINAL, 12-10 GA
22	2	28-8408-0300-10	TERMINAL, AMP #3237995
23	1	28-8412-0400-14	TAPE, FIBERGLASS

SIZE	MAIN ASSEMBLY USAGE							SUB-ASSEMBLY USED ON			
	20IP	20CQ	10EP	20EP	10HP	20HP	20CP	QTY	ASSEMBLY	QTY	ASSEMBLY
4	.	.	.	.	.	.	.	.	.	.	.
8	.	.	.	.	.	.	.	.	.	.	.
14	.	.	.	.	.	.	.	.	.	.	.
18	.	.	.	.	.	.	.	.	.	.	.
24	.	.	.	.	.	.	.	.	.	.	.
36	.	.	.	.	.	.	.	.	.	.	.

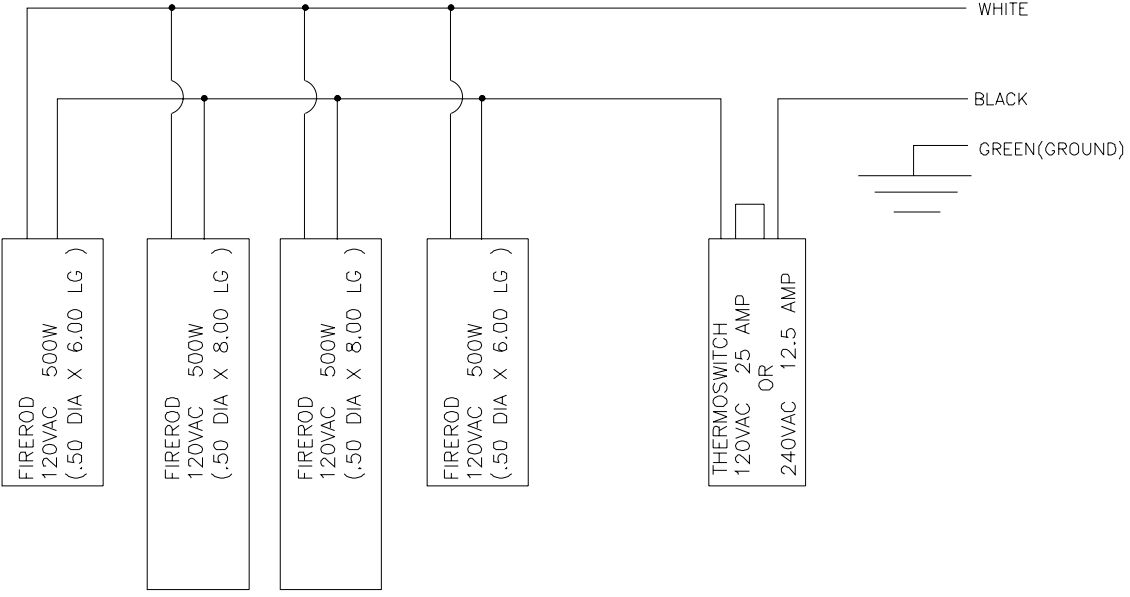
APPR:	DATE:	DATE:	02/03/03	SIZE	FROM NO.	QTY NO.	600266	REV	B
CHECKED:	DATE:	DATE:		SCALE	NONE	SHEET	1	OF	1

REMOVE ALL BURRS AND SHARP EDGES.  
 TOLERANCES:  
 DECIMAL: .XX±.015/.XXX±.005  
 ANGULAR: 1°

CHRISTIE MANUFACTURING INC.  
 HEATER ASSEMBLY, 28LM, 120VAC



REVISIONS				
ZONE	REV	DESCRIPTION	DATE	APPROVED



QUANTITY	FIRE ROD	TOTAL WATTS	TOTAL AMPS
4	120V 500W	2000	16.6

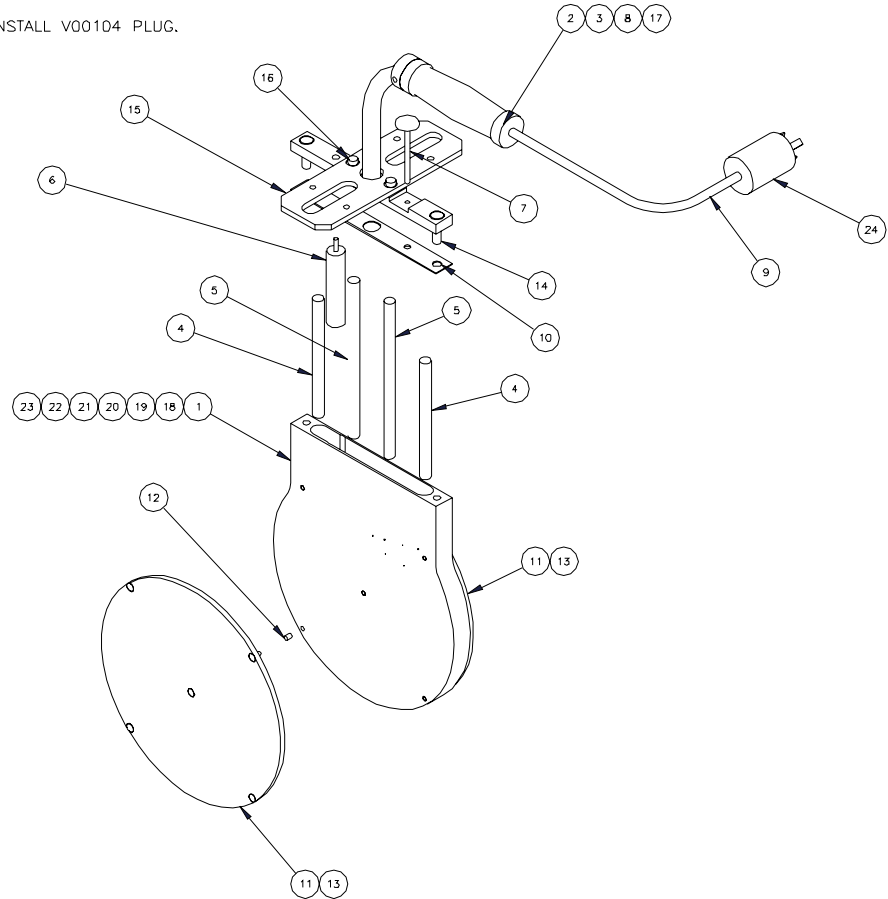
ALL DIMENSIONS ARE IN INCHES  
 TOLERANCES  
 FRACTIONS: ± 1/16  
 DECIMALS: .XX ± .015 / .XXX ± .005  
 ANGULAR: ± 1°

CHRISTIE MANUFACTURING INC.  
 WIRING DIAGRAM, 8" HEATER  
 120VAC

DRAWN: D.L.WEST	SIZE	FSCM NO.	DWG NO. 400007	REV
DATE: 04/18/99	SCALE	SHEET		

NOTES:  
 1. USE APPROX 1 FT OF TAPE, ITEM 23.  
 2. FINISH: NONE.  
 3. REMOVE EXISTING PLUG FROM CORD SET AND INSTALL V00104 PLUG.

REVISIONS				
ZONE	REV	DESCRIPTION	DATE	APPROVED



ITEM	QTY	PART NUMBER	DESCRIPTION
1	1	600267	CORE, HEATER, 28
2	1	600280	WELDMENT, HANDLE MOUNT
3	1	600088	HANDLE ASSEMBLY, HEATER
4	2	V00307	HEATER, CARTRIDGE, 240V, 500W-.5 X 6.00
5	2	V00023	HEATER, CARTRIDGE, 240V, 500W-.5 X 8.00
6	1	V00169	THERMOSWITCH, LARGE, 17052-0
7	1	V00168	THERMOMETER, 4" X 1/4"-28, 0-750 F
8	1	600226	STRAIN RELIEF, 1/2"
9	1	28-8404-0800-10	CORD SET(16/3) W/MOLDED PLUG
10	1	V00074	GASKET, HEATER, 8"
11	2	600204	BUTT PLATE, HEATER, 8"
12	10	V00642	HELICOIL 10-24 X .285
13	10	HS0045	SCREW, FLTHD, BRASS, 10-24 X .44
14	2	HS0027	SCREW, SOCHD, 3/8-16 X 1.00
15	1	600249	PLATE, HEATER PULL OFF
16	2	HB0112	BOLT, SHOULDER, 5/16 X .25
17	1	V00114	RING, HOG, #H1
18	1	28-8408-0530-10	TERMINAL, HIGHT TEMP
19	3	28-8412-0100-10	INSULATING SLEEVE, 1.63 LG
20	1	28-8408-0700-10	TERMINAL, AMP #323755
21	1	28-8408-0100-10	TERMINAL, 12-10 GA
22	2	28-8408-0300-10	TERMINAL, AMP #3237995
23	1	28-8412-0400-14	TAPE, FIBERGLASS
24	1	V00104	PLUG, ELEC, #2621, 30A-250V, M

SIZE	MAIN ASSEMBLY USAGE							SUB-ASSEMBLY USED ON			
	20IP	20CQ	10EP	20EP	10HP	20HP	20CP	QTY	ASSEMBLY	QTY	ASSEMBLY
4	.	.	.	.	.	.	.	.	.	.	.
8	.	.	.	.	.	.	.	.	.	.	.
14	.	.	.	.	.	.	.	.	.	.	.
18	.	.	.	.	.	.	.	.	.	.	.
24	.	.	.	.	.	.	.	.	.	.	.
36	.	.	.	.	.	.	.	.	.	.	.

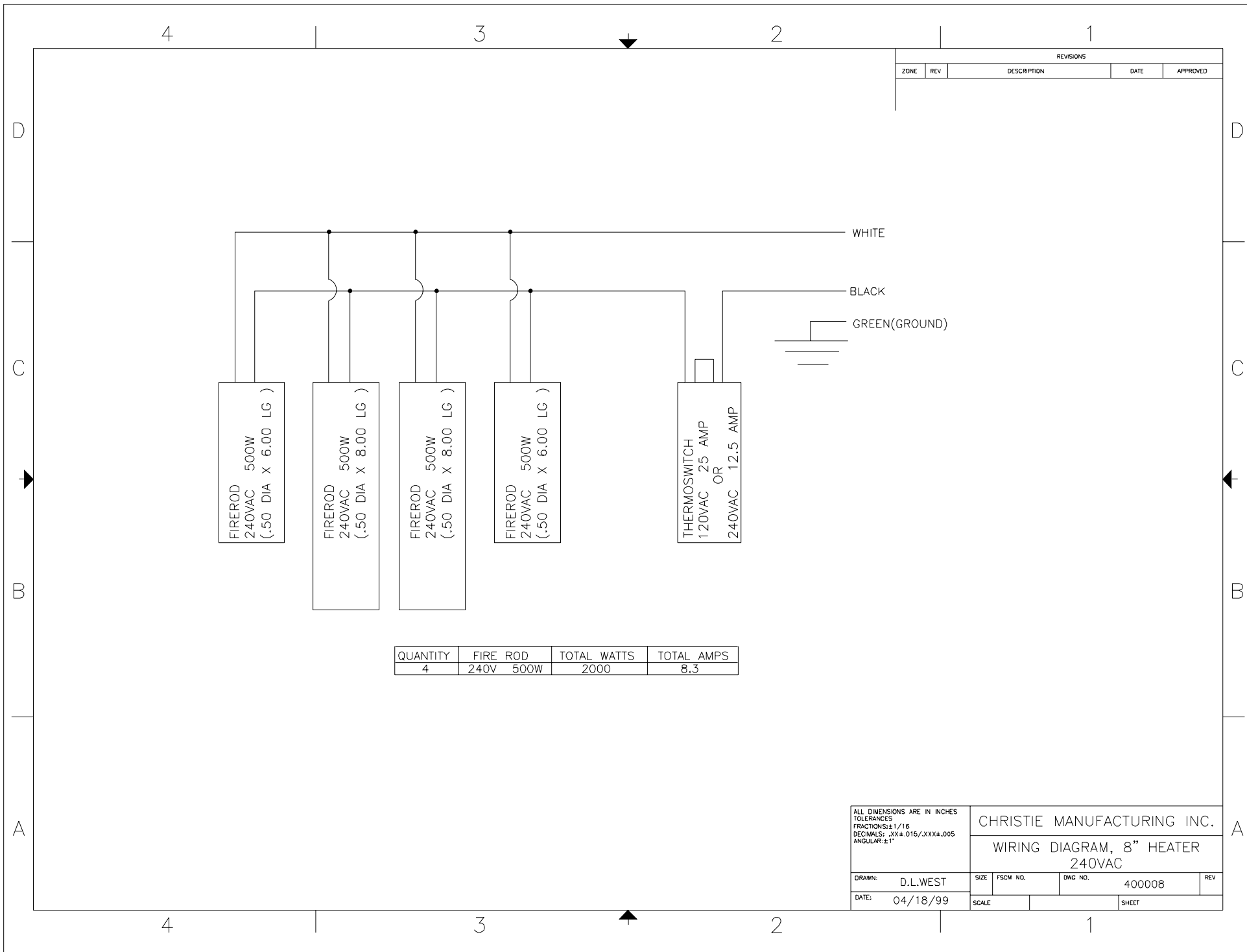
REMOVE ALL BURRS AND SHARP EDGES.  
 TOLERANCES:  
 DECIMAL: .XX#.015/.XXX#.005  
 ANGULAR: 1°

CHRISTIE MANUFACTURING INC.  
 HEATER ASSEMBLY, 28LM, 240VAC

DRAWN: D.L.WEST  
 DATE: 04/07/05

APPR: \_\_\_\_\_ DATE: \_\_\_\_\_  
 CHECKED: \_\_\_\_\_ DATE: \_\_\_\_\_

SCALE: NONE SHEET 1 OF 1



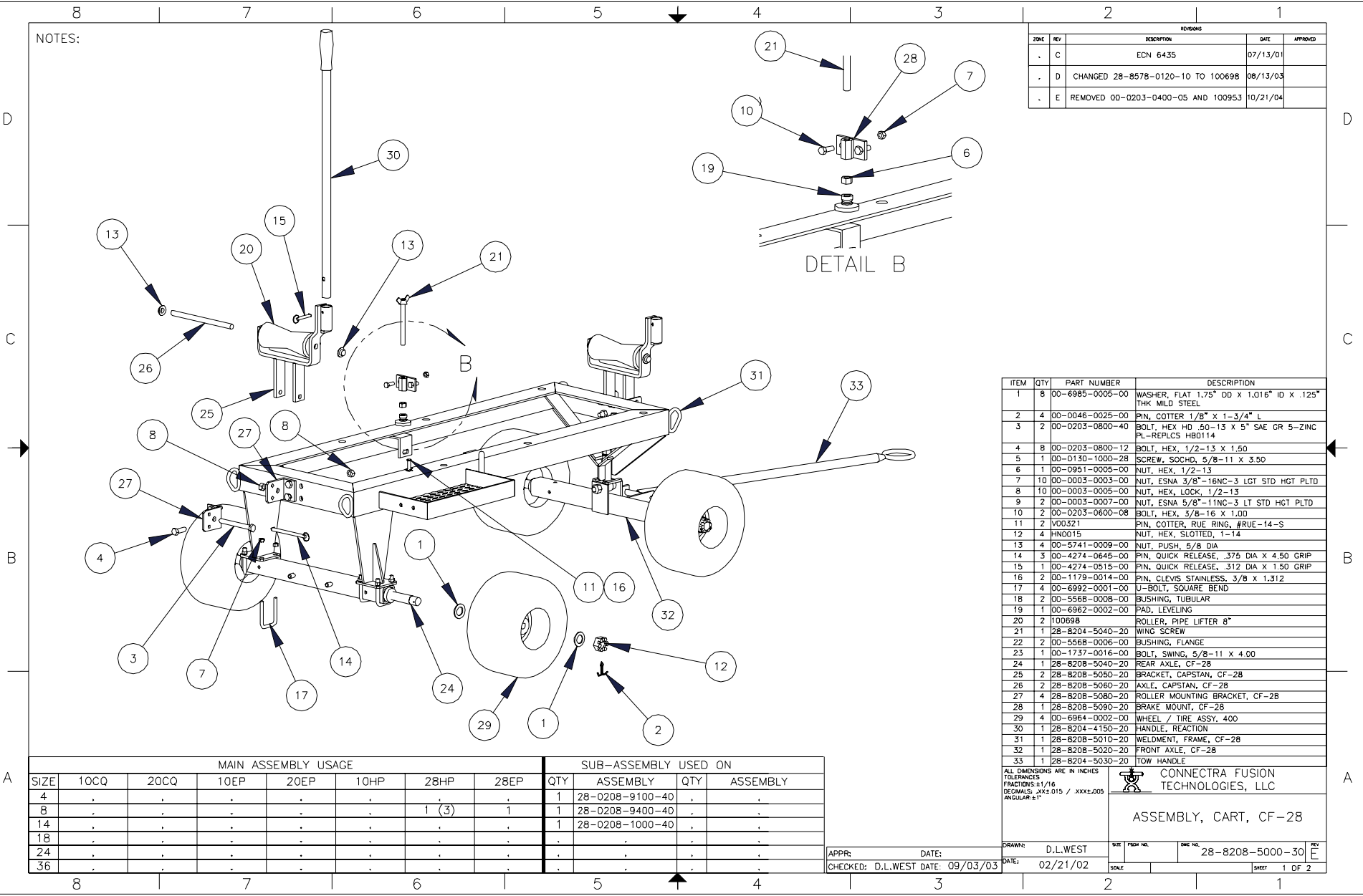
REVISIONS				
ZONE	REV	DESCRIPTION	DATE	APPROVED

QUANTITY	FIRE ROD	TOTAL WATTS	TOTAL AMPS
4	240V 500W	2000	8.3

<small>ALL DIMENSIONS ARE IN INCHES TOLERANCES FRACTIONS: ± 1/16 DECIMALS: .XX ± .015, .XXX ± .005 ANGULAR: ± 1°</small>		<b>CHRISTIE MANUFACTURING INC.</b>		
		<b>WIRING DIAGRAM, 8" HEATER 240VAC</b>		
DRAWN: D.L.WEST DATE: 04/18/99	SIZE: SCALE:	FSCM NO. SHEET	DWG NO. 400008	REV

NOTES:

ZONE		REV	DESCRIPTION	DATE	APPROVED
.	C		EDN 6435	07/13/01	
.	D		CHANGED 28-8578-0120-10 TO 100698	08/13/03	
.	E		REMOVED 00-0203-0400-05 AND 100953	10/21/04	



ITEM	QTY	PART NUMBER	DESCRIPTION
1	8	00-6985-0005-00	WASHER, FLAT 1.75" OD X 1.016" ID X .125" THK MILD STEEL
2	4	00-0046-0025-00	PIN, COTTER 1/8" X 1-3/4" L
3	2	00-0203-0800-40	BOLT, HEX HD .50-13 X 5" SAE GR 5-ZINC PL-REPLCS HB0114
4	8	00-0203-0800-12	BOLT, HEX, 1/2-13 X 1.50
5	1	00-0130-1000-28	SCREW, SOCHD, 5/8-11 X 3.50
6	1	00-0951-0005-00	NUT, HEX, 1/2-13
7	10	00-0003-0003-00	NUT, ESNA 3/8"-16NC-3 LGT STD HGT PLTD
8	10	00-0003-0005-00	NUT, HEX, LOCK, 1/2-13
9	2	00-0003-0007-00	NUT, ESNA 5/8"-11NC-3 LT STD HGT PLTD
10	2	00-0203-0600-08	BOLT, HEX, 3/8-16 X 1.00
11	2	V00321	PIN, COTTER, RUE RING, #RUE-14-S
12	4	HND015	NUT, HEX, SLOTTED, 1-14
13	4	00-5741-0009-00	NUT, PUSH, 5/8 DIA
14	3	00-4274-0645-00	PIN, QUICK RELEASE, .375 DIA X 4.50 GRIP
15	1	00-4274-0515-00	PIN, QUICK RELEASE, .312 DIA X 1.50 GRIP
16	2	00-1179-0014-00	PIN, CLEVIS STAINLESS, 3/8 X 1.312
17	4	00-6992-0001-00	U-BOLT, SQUARE BEND
18	2	00-5568-0008-00	BUSHING, TUBULAR
19	1	00-6962-0002-00	PAD, LEVELING
20	2	100698	ROLLER, PIPE LIFTER 8"
21	1	28-8204-5040-20	WING SCREW
22	2	00-5568-0006-00	BUSHING, FLANGE
23	1	00-1737-0016-00	BOLT, SWING, 5/8-11 X 4.00
24	1	28-8208-5040-20	REAR AXLE, CF-28
25	2	28-8208-5050-20	BRACKET, CAPSTAN, CF-28
26	2	28-8208-5060-20	AXLE, CAPSTAN, CF-28
27	4	28-8208-5080-20	ROLLER MOUNTING BRACKET, CF-28
28	1	28-8208-5090-20	BRAKE MOUNT, CF-28
29	4	00-6964-0002-00	WHEEL / TIRE ASSY, 400
30	1	28-8204-4150-20	HANDLE, REACTION
31	1	28-8208-5010-20	WELDMENT, FRAME, CF-28
32	1	28-8208-5020-20	FRONT AXLE, CF-28
33	1	28-8204-5030-20	TOW HANDLE

SIZE	MAIN ASSEMBLY USAGE							SUB-ASSEMBLY USED ON			
	10CQ	20CQ	10EP	20EP	10HP	28HP	28EP	QTY	ASSEMBLY	QTY	ASSEMBLY
4	.	.	.	.	.	.	.	1	28-0208-9100-40	.	.
8	.	.	.	.	.	1 (3)	1	1	28-0208-9400-40	.	.
14	.	.	.	.	.	.	.	1	28-0208-1000-40	.	.
18	.	.	.	.	.	.	.	.	.	.	.
24	.	.	.	.	.	.	.	.	.	.	.
36	.	.	.	.	.	.	.	.	.	.	.

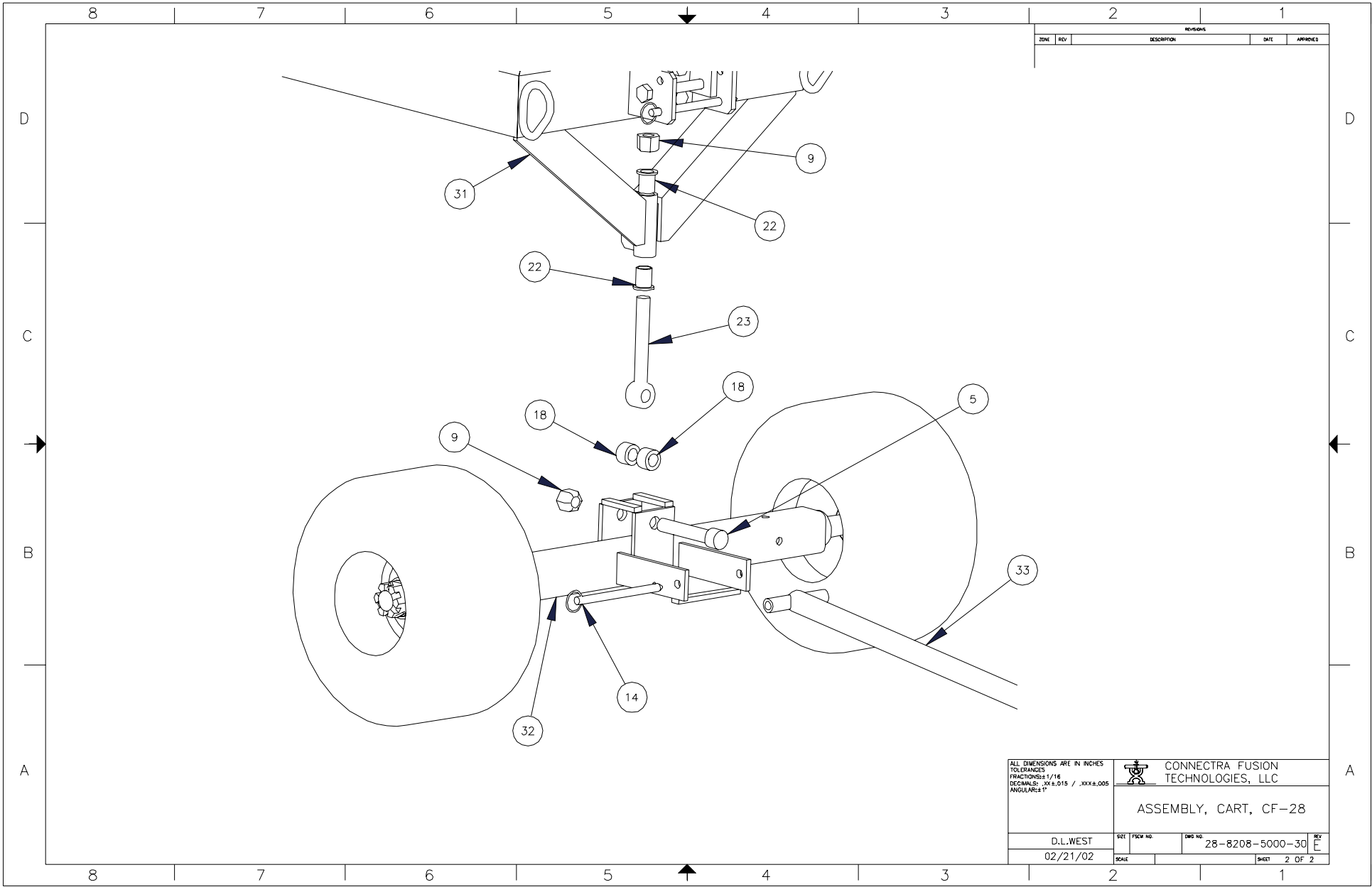
ALL DIMENSIONS ARE IN INCHES  
 TOLERANCES  
 FRACTIONS: ±.16  
 DECIMALS: .XX±.015 / .XXX±.005  
 ANGULAR: ±1°

**CONNECTRA FUSION TECHNOLOGIES, LLC**


**ASSEMBLY, CART, CF-28**

DRAWN: D.L.WEST  
 DATE: 02/21/02  
 CHECKED: D.L.WEST DATE: 09/03/03

SCALE: SHEET 1 OF 2



REVISIONS				
ZONE	REV	DESCRIPTION	DATE	APPROVED

ALL DIMENSIONS ARE IN INCHES TOLERANCES FRACTIONS: ±1/16 DECIMALS: .XX & .015 / .XXX ±.005 ANGULAR: ±1°		 <b>CONNECTRA FUSION TECHNOLOGIES, LLC</b>	
<b>ASSEMBLY, CART, CF-28</b>			
D.L.WEST	SIZE	TRCH NO.	DRG NO.
02/21/02	SCALE		28-8208-5000-30
			REV E
			SHEET 2 OF 2